

# Duplo



## DC - 618 SLITTER / CUTTER / CREASER

### SPECIFICATIONS

Speed (SRA3)	21-up Business Cards	9.2 sheets / min	550 sheets / hour
	4-up x A6 Greeting Cards	12.5 sheets / min	750 sheets / hour
	8-up x A6 Postcards	12.8 sheets / min	760 sheets / hour
	1-up x A3 Brochure	16 sheets / min	960 sheets / hour
Input Paper Size	W 210 to 330.5mm, L 210 to 1,000mm*		
Min. Finished Size	W 48 mm x L 50 mm		
Tolerance	± 0.3 mm business cards; ± 0.2 mm on programmed position		
Stacker Capacity	100 mm (Business cards 40mm)		
Paper Weight	110 - 400 gsm		
Slits	6 per sheet		
Cuts	30 per sheet		
Creases	20 per sheet		
Memory	250 jobs using the control panel, unlimited using the PC controller		
Standard Features	Air knife, card stacker, fan registration, automatic gutter slit deflectors, crease depth and width adjustment, ultrasonic double feed detection sensor, CCD scanner, PC Controller software, PC pole mount, long paper tray, and LCD control panel		
Options	PC and PC Arm, Side Air Blower, Perforation Module, Rotary Tool Module, Cross-Perforation Module, Conveyor Stacker		
Power Requirements	230V AC, 50/60Hz, 1.1A. 250W		

\* Length is 750 mm when using standard long paper feed tray.

Production rates are based on optimal conditions and may vary depending on stock and environmental conditions. As part of our continuous product improvement program, specifications are subject to change without notice.

**Duplo International Limited**  
Automated Precision House  
Hamm Moor Lane  
Addlestone  
Surrey KT15 2SD

Tel +44(0) 1932 263 900 - Fax +44(0) 1932 263 901  
info@duplointernational.com  
www.duplointernational.com

Duplo is a trade mark of the Duplo Corporation. Duplo has a policy of continuous improvement and reserves the right to amend the above specification without prior notice

Production rates are based on optimal operating conditions and may vary depending on stock and environmental conditions. As part of our continuous product improvement program, specifications are subject to change without notice.

Ref: DC-616\_02/20

# Duplo

## DC - 618 SLITTER / CUTTER / CREASER



All-In-One Light Production Finisher

DUPLOINTERNATIONAL.COM

# DC - 618

## SLITTER / CUTTER / CREASER



DC-618 shown with optional PC and PC arm

The fully automated DC-618 Slitter/Cutter/Creaser is Duplo's new compact yet powerful all-in-one finishing solution designed for today's digital printer. With the ability to process up to 6 slits, 30 cuts and 20 creases in one pass, the DC-618 delivers full-bleed applications up to 23 sheets per minute without white borders and toner cracking for a clean finish. Bring your finishing in-house with the DC-618!

### FINISH FULL BLEED APPLICATIONS ON DEMAND

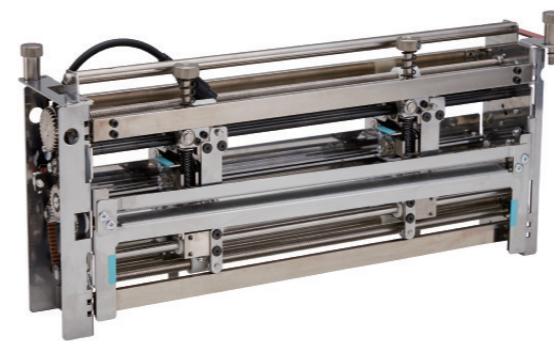
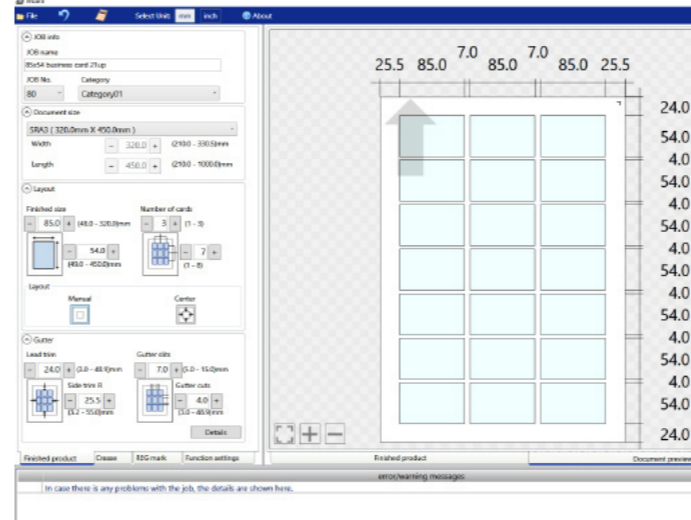
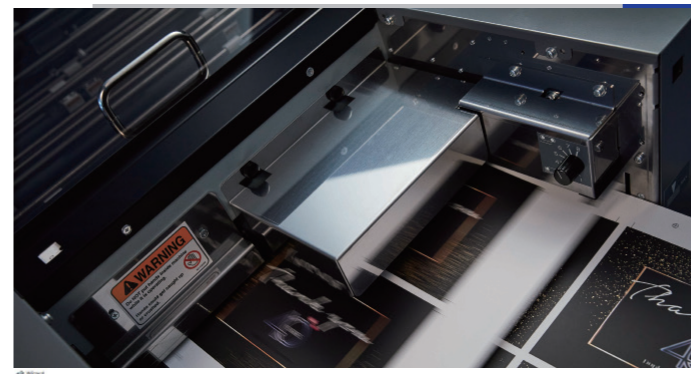
- 21-up business cards
- Postcards
- Greeting cards
- Invitations
- Perforated tickets
- Brochures
- Menus
- Direct mail pieces
- Book covers
- Tear-off vouchers
- Up to 23 sheets per minute
- Paper weight up to 400 gsm
- Up to 6 slits, 30 cuts & 20 creases
- 100 mm feed capacity stacker
- Enhanced PC Controller software
- Barcode & REG mark scanner

And much more!

### AUTOMATED FLEXIBILITY FOR OPTIMUM RESULTS

The DC-618 comes equipped with rotary slitters, a guillotine cutter and a depth-adjustable creaser; which together with options providing perforating and scoring, offers the versatility of multiple devices in one integrated system.

- The card stacker neatly collects small pieces such as business cards and postcards, or remove to stack larger format pieces.
- Creasing digitally printed sheets prevents toner cracking when folding.
- Creasing performance can be optimized for different stocks by using the crease tool features of adjustable depth and width.
- Features as standard a feed tray and stacker suitable for over-size sheets up to 750mm length, enabling large format jobs and increased productivity



### A NEW PC CONTROLLER TO ENHANCE PRODUCTIVITY

Using the Windows PC user interface, even inexperienced operators can program jobs with ease, make quick adjustments, and save an unlimited number of jobs onto the hard drive for instant changeover. Jobs can be reviewed and edited even while the DC-618 is running, further reducing operator setup time and increasing efficiency. Alternatively, operators can use the colour LCD control panel for set up and use it to save up to 250 jobs onto the built-in memory.

### EXTEND THE POSSIBILITIES WITH MULTIPLE FINISHING OPTIONS

**Side Air** - Provides further air separation to ensure smooth feeding of heavy long format sheets.

Optimise layout and productivity and create a wide range of high-value and complex applications such as tear-off tickets or reply cards.

**Perforation Module** - Manual setup with two tools for continuous perforations or scores (crease) in the direction of paper movement

**Rotary Tool Module** - Similar to the Perforator but positioning and adjustment is automated. Perforations can stop/start in programmable positions along the sheet

**Cross-Perforation Module** - Creates multiple stop/start perforations across the sheet

### AUTOMATED PREPRESS & FINISHING WITH EFI FIERY PRINT SERVICES

Save up to 70% in set up time by automating job preparation and eliminating manual data entry with Fiere Impose® in Fiere Driven™ print environments. Use Duplo imposition templates for Fiere Impose that match the finishing templates on the DC-618, or create custom layout jobs on the PC Controller, import into Fiere Impose and instantly see a preview of the finishing lines to verify job designs before printing. This integration offers timesaving workflows, reduces errors, and accelerates turnaround times. For more information, download the how-to guides and templates at [www.duplointernational.com/uk/Cutter-Creasers/products/2028/](http://www.duplointernational.com/uk/Cutter-Creasers/products/2028/)

### AUTOMATIC BARCODE AND REGISTRATION MARK SCANNER

Using the built-in CCD to read a printed barcode, the DC-618 will recall the job from memory and automatically setup, reducing changeover time and errors. In this way, varied jobs can be loaded and run automatically while the operator attends to other tasks. This automation is complemented by a second feature of the CCD to read a printed mark and compensate for any horizontal and vertical movement in the image, ensuring precision finishing every time.