

CP375 DUOTF PERFORATING, CREASING & FOLDING

Technical Specifications --- CP375 DUOTF Perforating, Creasing & Folding

| | | | |
|---------------------------------|--|------------------------|--|
| Feeder system | Suction feeder | Double sheet detection | Ultrasonic |
| Feeder capacity | 7.08" (180 mm) | Working system | Multigraf Quick-set™ |
| Paper size minimum | 4.13" x 5.82" (105 x 148 mm) | Deliveries | Folding = shingling delivery Creasing only = lower reception tray |
| Paper size maximum | 14.76" x 25.98" (375 x 660 mm) With table extension: 14.76" x 41.33" (375x 1,050 mm) | Speed | Up to 6,000 LTR/h |
| Paper stocks perforating | 80 -300 gsm or max. 0.3 mm* | Dimension | 125" x 24" x 52" |
| Paper stocks creasing & folding | 80 -400 gsm or max. 0.4 mm* | Weight | 805 lbs (365 kg) |
| Sheet transfer device | Vacuum belt | Electrical connection | 100-240 VAC, 50/60 Hz |
| Control panel | Touchscreen | | |

* Paper stocks depending on material quality



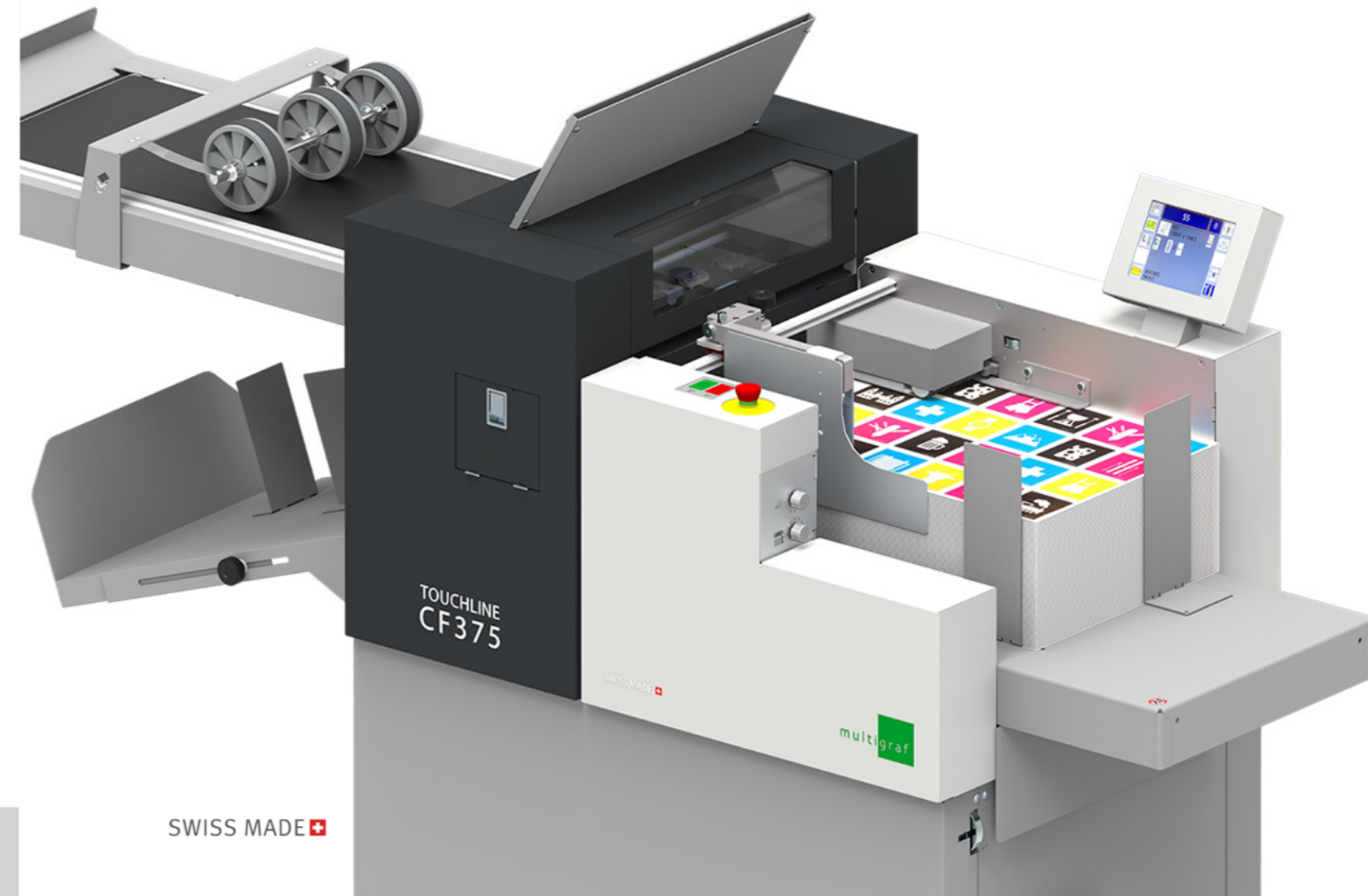
AFTERPRINT

THE NEW DIMENSION IN PERFORATING, CREASING & FOLDING

CF375
CP375 DUO
CP375 DUOTF



| | | | | | | |
|-----------------------------|----------------------------|-------------------|---------|-------------------|--------------------------|--------------------------|
| Max Size 375 x 1050mm | Min Size 105 x 148mm | 80- 400 gsm | 2 Folds | Max Creases 20 | Speed 5000 A4/hour | Speed 6000 A5/hour |
|-----------------------------|----------------------------|-------------------|---------|-------------------|--------------------------|--------------------------|



Distributed by: AfterPrint Ltd

Unit F, Hoyle Point, Hoyle Street, Warrington, Cheshire, WA5 0LW Tel: 01925 611560
All rights reserved. No part of this document may be produced without prior written consent from AfterPrint Ltd

www.AfterPrintLtd.co.uk

SWISS MADE 



AFTERPRINT CF375 CREASING & FOLDING

Technical Specifications --- CF375 Creasing & Folding

| | | | |
|-------------------------|---|-----------------------|-----------------------|
| Feeder system | Suction feeder | Fold system | Multigraf Pro-Knife™ |
| Feeder capacity | 7.08" (180 mm) | Number of fold knives | 2 |
| Paper size minimum | 4.13" x 5.82" (105 x 148 mm) | Fold length minimum | 1.18" (30 mm) |
| Paper size maximum | 14.76" x 25.98" (375 x 660 mm) With table extension: 14.76" x 41.33" (375 x 1,050 mm) | Fold length maximum | 19.68" (500 mm) |
| Paper stocks | 80 -400 gsm or max. 0.4 mm* | Delivery belt length | 35.43" (820 mm) |
| Control panel | Touchscreen | Reception tray height | 4.72" (120 mm) |
| Creasing system | Multigraf Swing-Bar™ | Speed | Up to 6,000 LTR/h |
| Crease styles | 2, standard and narrow | Dimension | 74" x 24" x 52" |
| Crease depths | 3 automatic setups | Weight | 432 lbs (196 kg) |
| Minimum crease distance | 1.18" (30 mm) | Electrical connection | 100-240 VAC, 50/60 Hz |
| Number of creases | 20 | | |

* Paper stocks depending on material quality

CF375 supports the following common fold types:



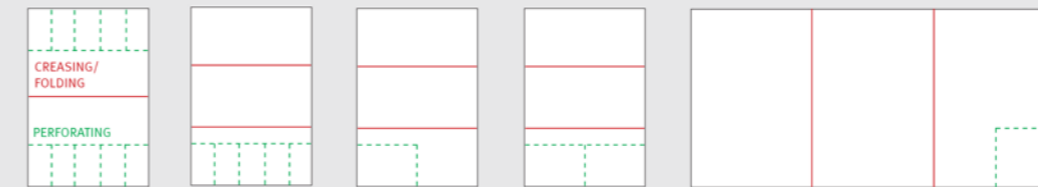

AFTERPRINT CP375 DUO PERFORATING & CREASING

Technical Specifications --- CP375 DUO Perforating & Creasing

| | | | |
|--------------------------|---|------------------------|---|
| Feeder system | Suction feeder | Double sheet detection | Ultrasonic |
| Feeder capacity | 7.08" (180 mm) | Working system | Multigraf Quick-set™ |
| Paper size minimum | 4.13" x 5.82" (105 x 148 mm) | Reception tray height | 4.72" (120 mm) |
| Paper size maximum | 14.76" x 25.98" (375 x 660 mm) With table extension: 14.76" x 41.33" (375 x 1,050 mm) | Speed | Up to 6,000 LTR/h |
| Paper stocks perforating | 80 -300 gsm or max. 0.3 mm* | Delivery belt | Optional shingling delivery, L = 43.3" (1,100 mm), P/N 482.112 |
| Paper stocks creasing | 80 -400 gsm or max. 0.4 mm* | Dimension | 65" x 24" x 48" |
| Creasing system | Multigraf Swing-Bar™ | Weight | 362 lbs (164 kg) |
| Control panel | Touchscreen | Electrical connection | 100-240 VAC, 50/60 Hz |

* Paper stocks depending on material quality

Sample Applications In One Operation

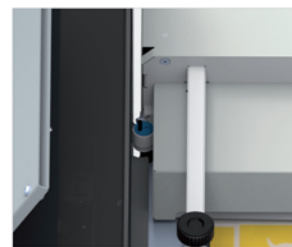


Standard Tools Cross Direction

| | Perforating | Creasing |
|----------------------------|--------------------------------|--------------------------|
| Tool detection | automatic | automatic |
| Pressure adjustment | 3 depths for each style | 3 depths for each style |
| Number of tools (standard) | 1 perforating tool, 11 TPI | 1 negative creasing tool |
| Optional perforating knife | 17 TPI and 26 TPI | - |
| Additional tools | optional stop perforating tool | positive creasing tool |
| Number of operations | up to 20 per sheet | up to 20 per sheet |
| Minimum distance | 3 mm | 1 mm |
| Time perforating/creasing | yes, optional | - |

Standard Tools Cross Direction

| | |
|---------------------------|--|
| Perforating | 2 standard heads, max 4 heads simultaneously |
| Standard perforation | 11 TPI (optional : 17 TPI/26 TPI) |
| Minimum distance | 30 mm, from line to line |
| Distance time perforation | min. 5 mm |
| Number of operations | 1 - 5 per sheet |



Double sheet detection
A professional ultrasonic double sheet detection system which offers a 100% control of all sheets running through the machine.



Two delivery sections
The delivery side consists of two different output levels. For creasing and folding, the upper delivery belt is used. For creasing only the lower reception tray.



Perforating device
An online perforating device is available for the lower exit level as an option.

| | | | | | | |
|-----------------------------|----------------------------|-------------------|---------|-------------------|--------------------------|--------------------------|
| Max Size 375 x 1050mm | Min Size 105 x 148mm | 80- 400 gsm | 2 Folds | Max Creases 20 | Speed 5000 A4/hour | Speed 6000 A5/hour |
|-----------------------------|----------------------------|-------------------|---------|-------------------|--------------------------|--------------------------|



CF375
SWISS MADE 

| | | | | | |
|-----------------------------|----------------------------|-------------------|-------------------|--------------------------|--------------------------|
| Max Size 375 x 1050mm | Min Size 105 x 148mm | 80- 400 gsm | Max Creases 20 | Speed 5000 A4/hour | Speed 6000 A5/hour |
|-----------------------------|----------------------------|-------------------|-------------------|--------------------------|--------------------------|



CP375 DUO
SWISS MADE 