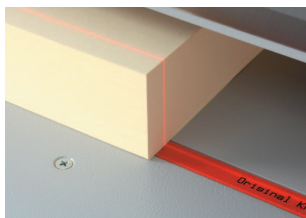


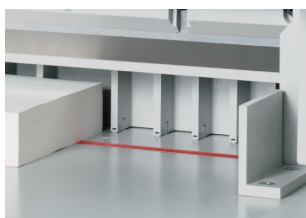
IDEAL 4810-95

Power guillotine with manual spindle clamping system and 475 mm cutting length

Electro-mechanical blade drive. Spindle guided backgauge with hand crank. Digital measurement readout for backgauge positioning (cm or inches). Optical cutting line with bright and durable LEDs. Adjustable backgauge with narrow separations and plastic gliders. Manual spindle clamp, guided on both sides, with large hand wheel. Two side lays each on front and rear tables. Blade made of German high quality steel. Solid steel blade carrier and adjustable blade guides. Blade depth adjustment from the outside of the machine. Easy blade change from the front of the machine without removing covers. Comprehensive SCS safety package as described on pages 10/11. Solid all-metal construction. Complete with stand and storage shelf. Power supply: 230 V / 50 Hz / 1~ (other voltages available), Motor performance (input capacity): 1.1 kW, Dimensions (H x W x D): 1360 x 755 x 970 mm, Weight: 194 kg, Colour: pearl grey.



The optical cutting line with bright, durable LEDs shows where the cut will be performed and helps to align cutting marks precisely for accurate cuts.



Two side lays each on front and rear tables and the precise backgauge allow exact positioning even for small paper stock.



Cutting length	475 mm
Cutting height	80 mm
Narrow cut	30 mm
Table depth	458 mm